



Pressure Regulators Service Kit Part No. 7851

Kit Contains

4508-8	Diaphragm Assembly
2021-4	Valve Spring
6495-407	O-Ring
7498-2	Valve (short)
7498-3	Valve (long)

Used for the following model numbers:

7840-1, 7842-1 (standard knob)
7848-1, 7849-1, 7846 (tamper-proof cap)

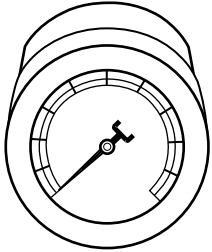
Also used for Agit-Air Control (2443-11)

Service Instructions

Replacement parts for KING pressure regulators and Agit-Air™ Control

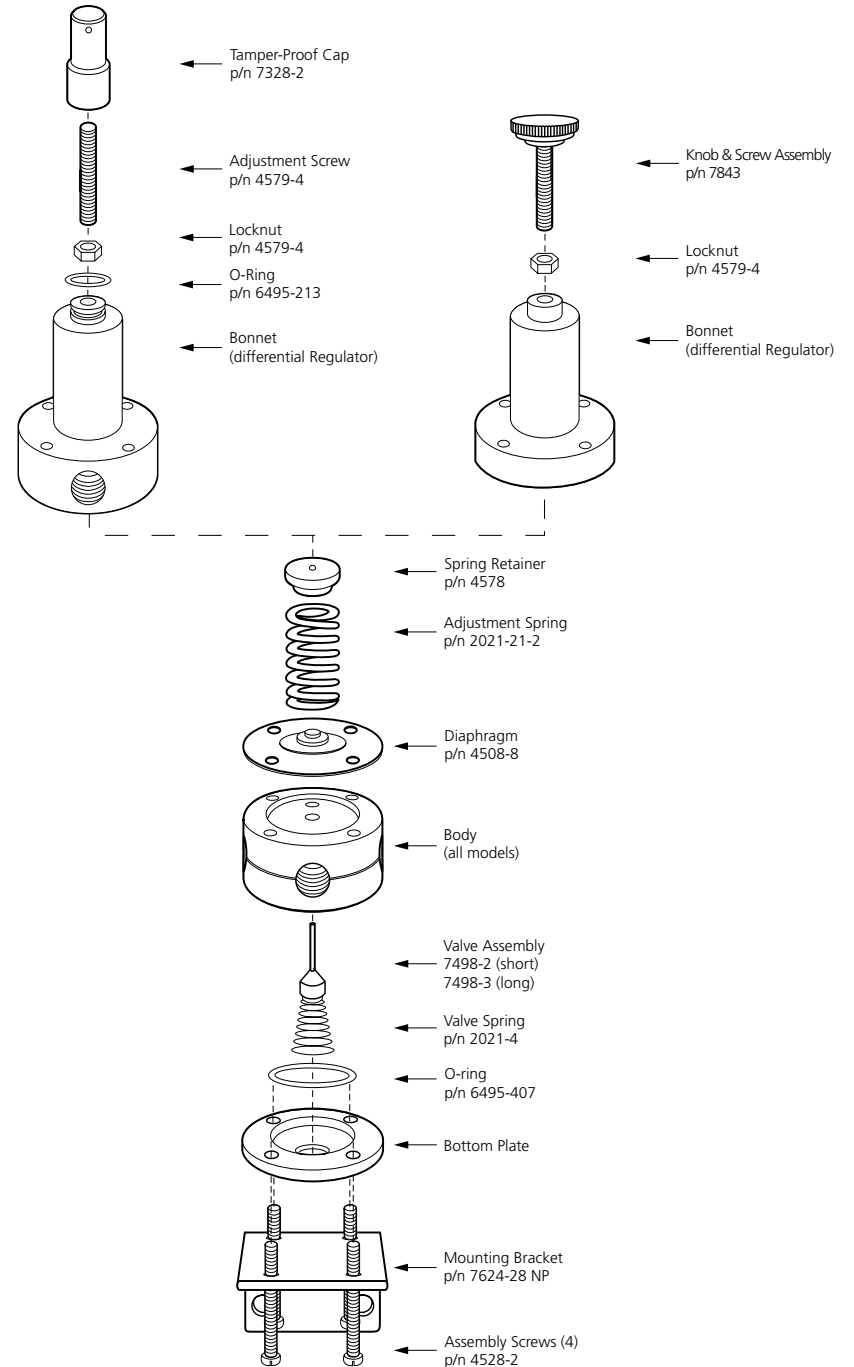
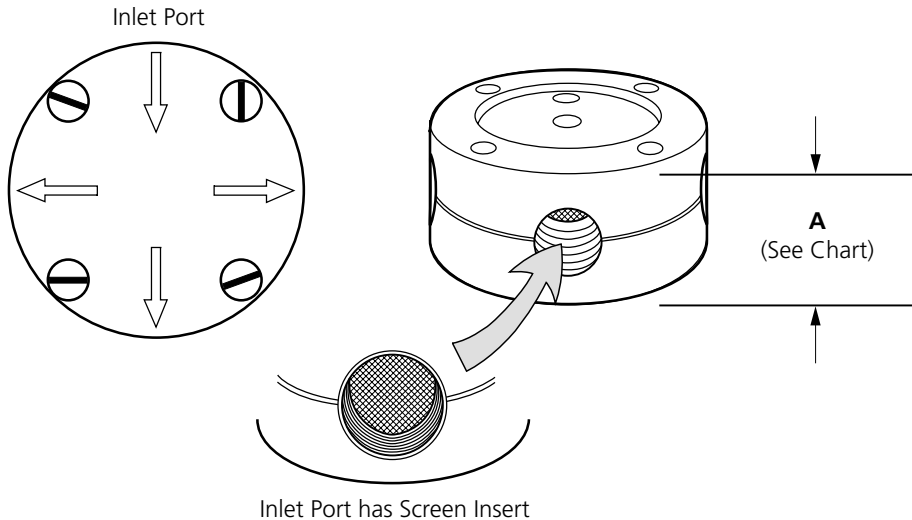
1. To disassemble, remove the four (4) screws on the underside of the regulator.
2. Measure body section thickness to determine proper valve replacement selection (short or long).
3. For re-assembly, make certain the adjustment spring (i.e., the heavier spring) fits over the raised steps on the diaphragm.
4. Align bottom plate so that inward pointing arrow corresponds to inlet port (with screen). See detail.

For replacement 0-160 pressure gauge, order part no. 6504-53



Pressure Gauge

A Dimension	Valve to use
7/8 in.	Short
15/16 in.	Long



Detail: Pressure Regulator