

Service Parts & Dimensions – 1080-10.25

Effective: January, 1996 (original release)

Tank Plus™ Indicator Models 5200-x11, 5200-x12, 5200-x21 and 5200-x22

Specifications – Multiple Tank Level Indicator

- **Input Power Requirements**
Nominal 115 Vac, 50/60 Hz.; 30 watts (1/2 Amp @ 60 W max.)
- **Temperature Range** (Environmental)
30°F to 120°F/-1°C to 49°C operating
- **Signal Input**
4-20 milliampere (mA_{dc})
- **Input Channels**
4-tank or 8-tank signal input channels
- **Readout**
1/2 in. LCD, 7-digit, 4-digit resolution (0-9999000)
- **Accuracy**
±0.048% F.S. (±0.024% F.S. typical)
- **Resolution**
0.024% F.S. (±0.004 mA)
- **Output Power**
24 Vdc transmitter excitation; 0.5 Amp maximum

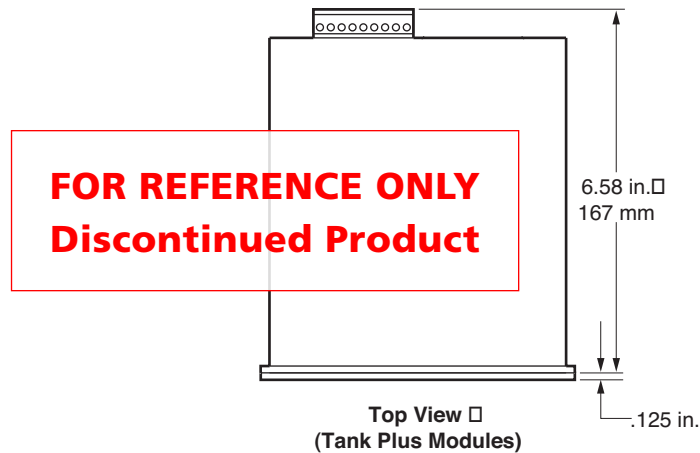
Tank Select Module – Multiple tank 4-button or 8-button selection panel. User selection tells indicator to display individual tank input channels and address associated PROM application file. User specified switch nomenclature.

Function Option – 4-button or 8-button function option select panel. Preprogrammed weight/volume/english/metric (display mode) and/or standardized density value (function mode) selections.

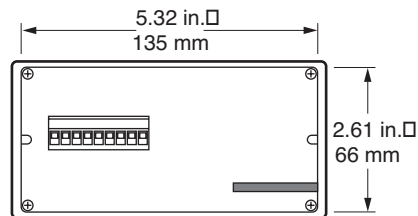
Panel Mount Housings - Extruded aluminum housing with bezel mounts through cut-out in panel. Aluminum clamp bars slide into channels on edge of housing to accommodate various panel thicknesses. An Allen screw locks clamp bars in position.

Optional Wall Mount Enclosures -

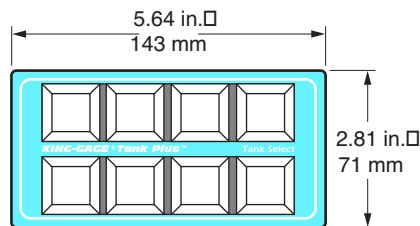
- Fiberglass-reinforced polyester (FRP), U.L. listed (U.L. 508) types 3, 3R, 3S, 4, 4X, and 12. Hinged cover with dual latching screws.
- 304 Stainless steel splash-proof, intended to meet NEMA 4X.
- Enclosures measure 15.5" H x 13" W x 8.5" D overall.



Front View - Tank Plus Display Module



Rear View - Tank Plus Modules



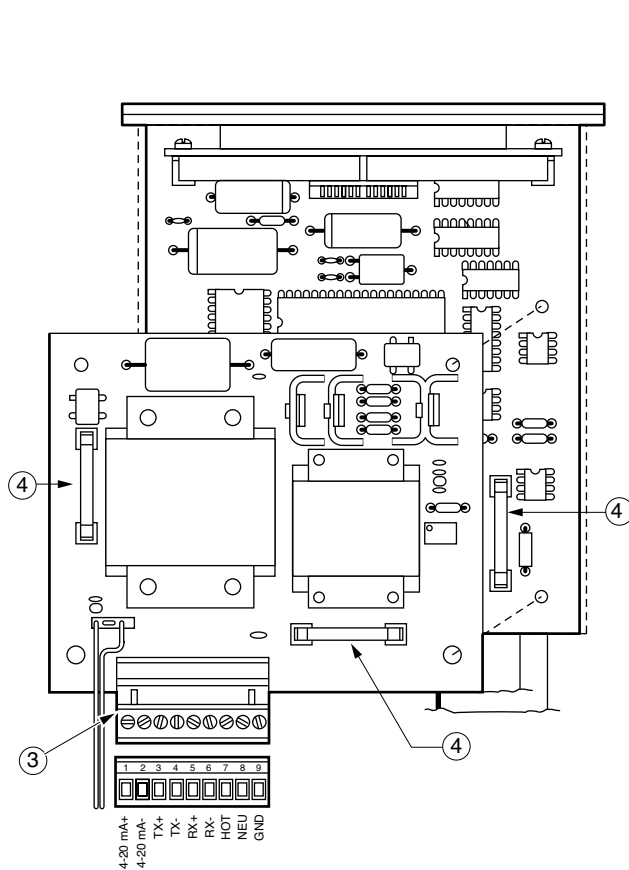
Front View - Tank Select Module

© King-Gage and the KE emblem are registered trademarks of King Engineering Corporation, Ann Arbor, Michigan, U.S.A.

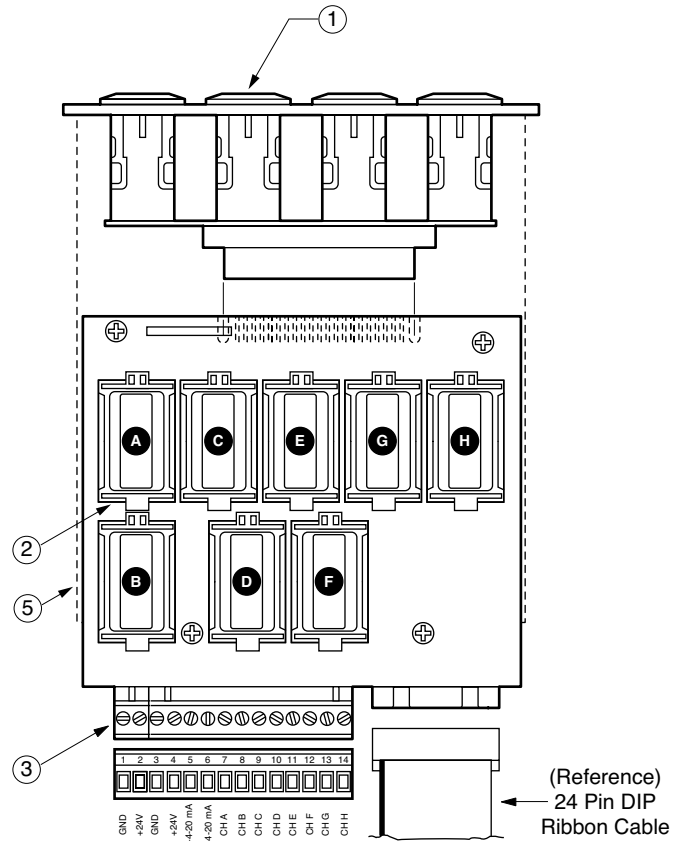
All specifications are subject to change without notice
© 1996 King Engineering Corporation. All rights reserved



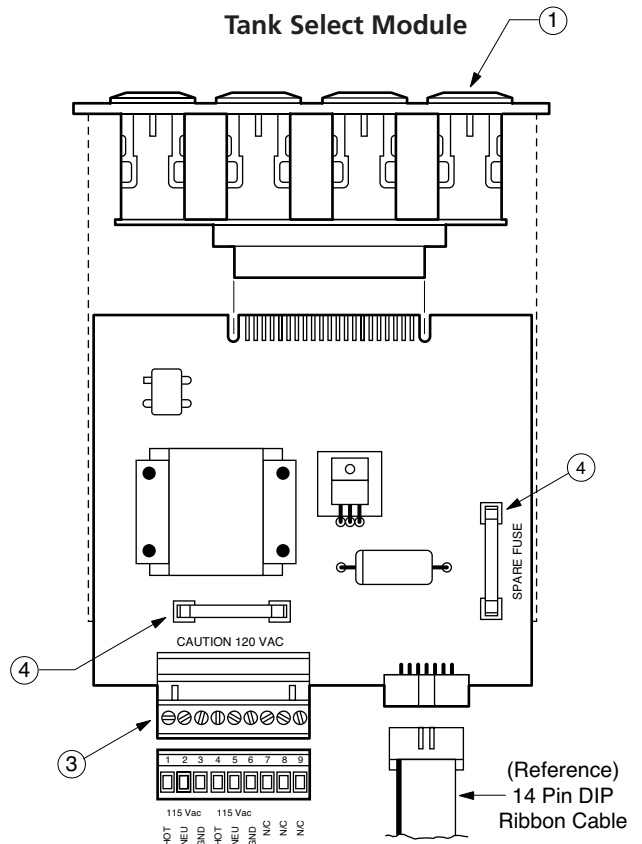
P. O. Box 1228, Ann Arbor, Michigan 48106-1228 U.S.A.
3201 South State Street, Ann Arbor, Michigan 48108-1625 U.S.A.
Phone: (734) 662-5691 ▪ FAX: (734) 662-6652 ▪ www.king-gage.com



Tank Plus Display Module



Tank Select Module



Function Select Module

Service Parts List

Item	Description	Part No.
1Pushbutton Switches- • 10-Pack Switch Lamps	7407-22
	• Moisture Cover	7402-2
	• Cap & Legend (note 1).....	8083-10
2Application Datapacks	3206
	(note 2)	
3Socket Connectors- • 2-pin.....	5858-2
	• 9-pin.....	5858-9
	• 12-pin.....	5858-12
41/2 Amp Fuse - 120/250 Volt Fast-Blo (5-pack).....	7469-21-0
5Side Rail - • Set Screw.....	5921-1
	(6-32 x 3/8 Hex Socket Cup Point)	

Notes:

- (1) Nomenclature and indicator serial number must be specified when ordering replacement legend.
- (2) Complete tank data is required for programming datapacks.