

Service Parts & Dimensions – 1010-23.11

Effective: February, 1998 (replaces November, 1995)

TeleSensor Diaphragm Unit External Mounting - Base No.'s 422, 423 & 424

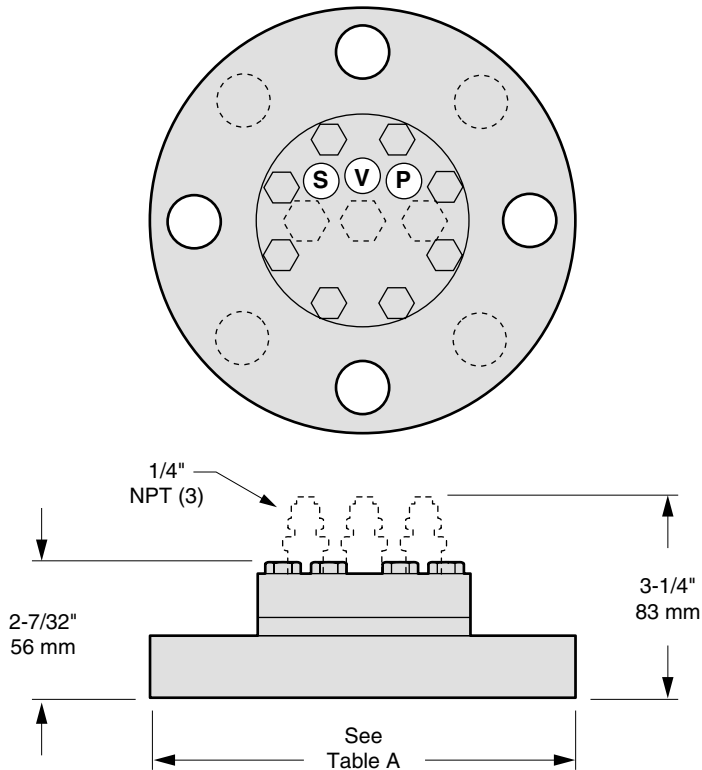
Part Number Key -

42x-xxx

Flange Size

- 2 - 2" ANSI, 150 lb.
- 3 - 3" ANSI, 150 lb.
- 4 - 4" ANSI, 150 lb.

Dimensions -



Dash No.	Flange	Body	Diaphragm
11x	carbon steel	brass	316 stainless
14x	carbon steel	brass	titanium
21x	carbon steel	304 stainless	316 stainless
31x	304 stainless	brass	316 stainless
34x	304 stainless	brass	titanium
41x	304 stainless	304 stainless	316 stainless
51x	303 brewery	brass	316 stainless
61x	303 brewery	304 stainless	316 stainless
71x	316 stainless	brass	316 stainless
74x	316 stainless	brass	titanium
81x	316 stainless	304 stainless	316 stainless
93x	PVC	brass	Kel-F

x - final digit specifies connections. 1 = 1/4 NPT, 3 = 1/4 PolyFlo, 4 = 1/4 Hi-Duty

Table A -

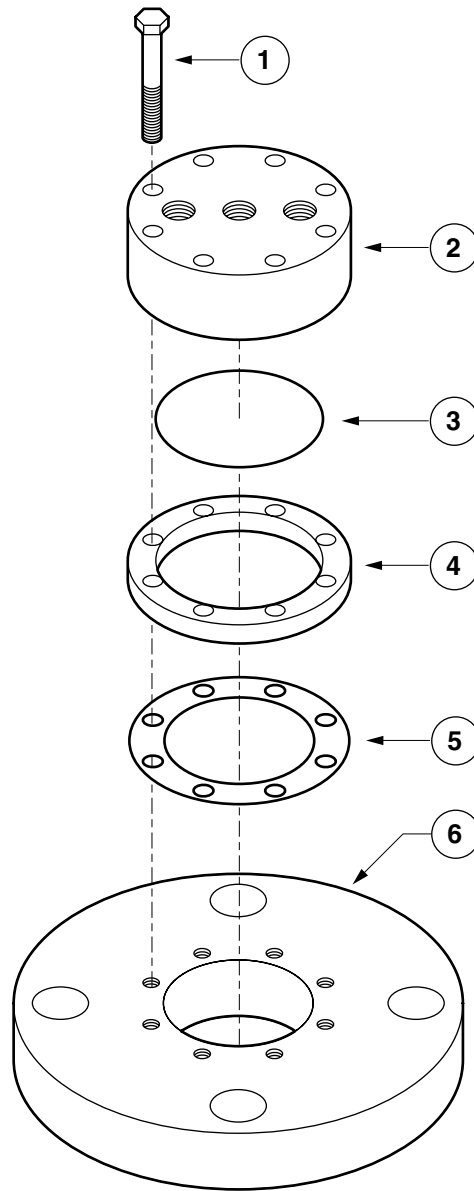
Base	Flange Size	Diameter
422-	2" 150-lb B.16 ANSI	6.0 in/ 153 mm
423-	3" 150-lb B.16 ANSI	7.5 in/ 191 mm
424-	4" 150-lb B.16 ANSI	9.0 in/ 229 mm

Service Parts - Base No.'s 422, 423 & 424:

Item	Description	Part No.	Qty.	Notes
1	Hex Head Cap Screw	8279-9	8	
		8279-15	8	1
2	Body, Brass	6430-12	1	
	Body, 304 Stainless	6430-13	1	2
3	Diaphragm, Kel-F	6448-4	1	
	Diaphragm, Tantalum	6448-5	1	
	Diaphragm, 316 Stainless	6448-13	1	
	Diaphragm, Hastelloy®	6448-24	1	
4	Ring, 304 Stainless	6441	1	
	Ring, 316 Stainless	6441-3	1	
	Ring, 304 Stainless	6441-21	1	3
	Ring, 316 Stainless	6441-23	1	3
5	Teflon Gasket	6438	1	4
6	Flange, 2", Carbon Stl.	6906	1	
	Flange, 2", 304 Stainless	6906-4	1	
	Flange, 2", 316 Stainless	6906-3	1	
	Flange, 2", PVC	6906-5	1	
	Flange, 3", Carbon Stl.	6443-3	1	
	Flange, 3", 304 Stainless	6443-2	1	
	Flange, 3", 316 Stainless	6443-5	1	
	Flange, 3", PVC	6443-6	1	
	Flange, 3", 303 Stainless	6443-4	1	
	Flange, 4", Carbon Stl.	6907	1	
	Flange, 4", 304 Stainless	6907-2	1	
	Flange, 4", 316 Stainless	6907-3	1	
	Flange, 4", PVC	6907-4	1	

Notes:

1. PVC and Brewery Flanges only.
2. High temperature (0°-250°F) units require 304 stainless steel body.
3. Required for units with Kel-F diaphragms.
4. Units with PVC or Brewery flange do not require Teflon gasket or ring.



Reference Documentation -

- EX-1525-1 Troubleshooting Guide - TeleSensor Systems
- K-1020 Installation Instructions - External Mount TeleSensor

® King-Gage and the KE emblem are registered trademarks of King Engineering Corporation, Ann Arbor, Michigan, U.S.A.
 All specifications are subject to change without notice
 © 1995 King Engineering Corporation. All rights reserved