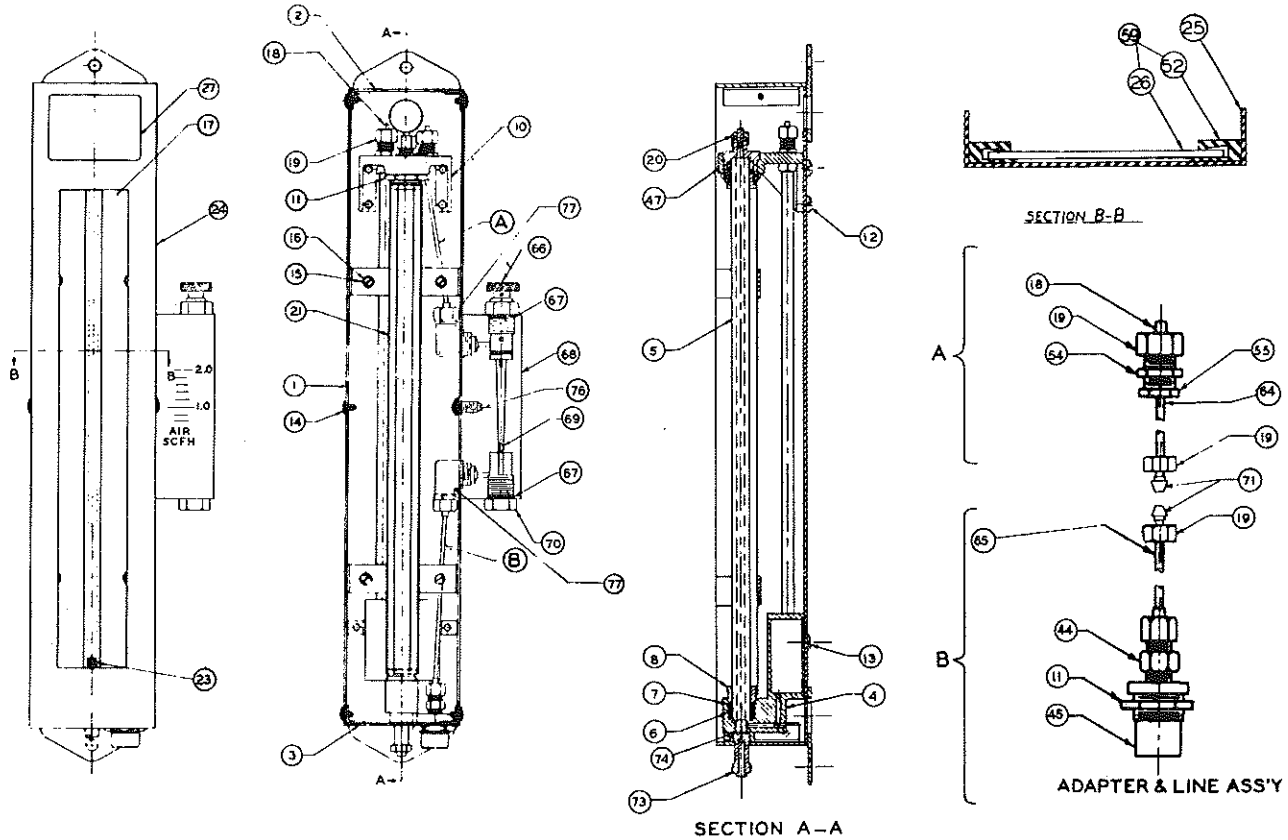


EFFECTIVE
SEPT. 1959

KING-GAGE PARTS LIST
 MODELS TDMR- TDRR- TDGR- (BLACK CASES)
 MODELS TDMSR- TDRSR- TDGSR- (ST. STEEL CASES)
 (Comp. Air Operated - Bottom of Gauge Connection
 w/Integral Rotameter)

E-3213-9

Subject to change
without notice



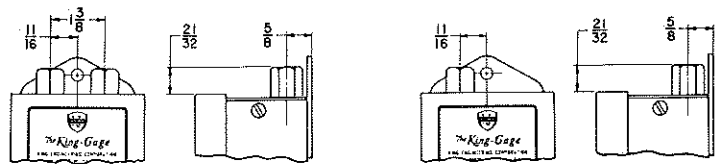
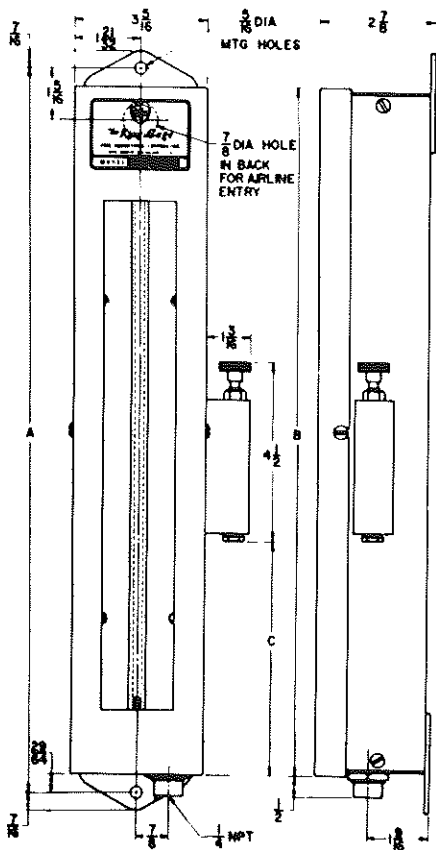
*WHEN ORDERING PARTS BE SURE TO SPECIFY GAUGE MODEL AS SHOWN ON NAMEPLATE.

LIST OF MATERIALS

PC. NO.	NAME	MATERIAL	PART NO.	REMARKS
1	GAUGE CASE	STEEL	7002*	FOR BLACK MODELS ONLY
	GAUGE CASE	ST. STEEL	7002SN*	FOR ST. STEEL MODELS ONLY
2	TOP PLATE ASSY.	STEEL	7615-2R	FOR BLACK MODELS ONLY
	TOP PLATE ASSY.	ST. STEEL	7615-2SR	FOR ST. STEEL MODELS ONLY
3	BOTTOM PLATE (WELDMENT)	STEEL	7614	FOR BLACK MODELS ONLY
	BOTTOM PLATE (WELDMENT)	ST. STEEL	7614SN	FOR ST. STEEL MODELS ONLY
4	WELL ASSEMBLY	ST. STEEL	7562*	FOR MOD. LGTHS 6-35 SERVICED AS ASSEMBLIES ONLY
	WELL ASSEMBLY	ST. STEEL	7568*	FOR MOD. LGTHS 43-73 SERVICED AS ASSEMBLIES ONLY
	WELL ASSEMBLY	ST. STEEL	7681*	FOR MOD. LGTHS 81-99 SERVICED AS ASSEMBLIES ONLY
5	GLASS TUBE	PYREX	7573*	
6	GLASS TUBE PACKING GASKET	PURE GUM RUBBER	4034	FOR MERCURY MODELS ONLY
	GLASS TUBE PACKING GASKET	SILICONE	8179	FOR RED & GREEN LIQ. MODELS ONLY
7	GLASS TUBE PACKING WASHER	HD. FIBRE	4029	
8	GLASS TUBE PACKING NUT	STEEL NP	7515	FOR TDMR MODELS ONLY
	GLASS TUBE PACKING NUT	BRASS	7515-2	FOR TDRR & TDGR MODELS ONLY
	GLASS TUBE PACKING NUT	ST. STEEL	7515-4	(TDMSR, TDRSR, TDGSR) FOR ST. STEEL MODELS ONLY
10	CONNECTOR BRACKET	ZINC	4003	
11	LOCKNUT	BRASS NP	4006	
12	SCREW	ST. STEEL	7061	
13	SCREW	ST. STEEL	7079	
14	SCREW	ST. STEEL	7080-2	
15	SCALE SCREW	ST. STEEL	1848	
16	SCALE SCREW WASHER	BRASS NP	4082	
17	SCALE STRIPS, BLANK	ALUMINUM	7082-2*	
18	DUMMY CONE	STEEL NP	2076	REMOVED AFTER INSTALLATION FOR MERCURY MODELS ONLY
	DUMMY CONE	BRASS	1688	REMOVED AFTER INSTALLATION FOR RED & GREEN LIQUID MODELS ONLY
19	AIRLINE NUT	BRASS	2745	
20	AIRLINE NUT	BRASS	1498	
21	REFLECTOR	FIBER	6076-*	
23	MERCURY, TRIPLE DISTILLED	MERCURY	2604	FOR MERCURY MODELS ONLY
	INDICATING LIQUID	294 RED	2992	FOR RED LIQUID MODELS ONLY

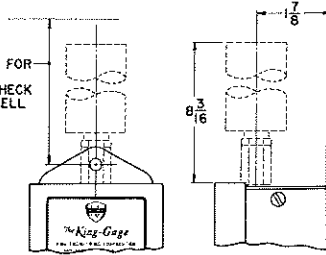
LIST OF MATERIALS

PC. NO.	NAME	MATERIAL	PART NO.	REMARKS
23	INDICATING LIQUID	120 GREEN	3642	FOR GREEN LIQUID MODELS ONLY
24	FRONT COVER ASSY.	STEEL	8815F*	FOR BLACK MODELS ONLY
	FRONT COVER ASSY.	ST. STEEL	8815SN*	FOR ST. STEEL MODELS ONLY
25	FRAME (WELDMENT)	STEEL	7618F*	FOR BLACK MODELS ONLY
	FRAME (WELDMENT)	ST. STEEL	7618SN	FOR ST. STEEL MODELS ONLY
26	GLASS PLATE	GLASS	7089-5	FOR MOD. LGTHS 6-43
	GLASS PLATE	GLASS	7089-6	FOR MOD. LGTHS 51-88
27	UPPER NAMEPLATE	ALUMINUM	7578*	FOR BLACK MODELS ONLY
	UPPER NAMEPLATE	ST. STEEL	7578SN*	FOR ST. STEEL MODELS ONLY
44	CONNECTOR	BRASS	3926	
45	ADAPTER	BRASS NP	7119-7	
47	EQUALIZER CONNECTOR	ST. STEEL	7514	
52	GLASS PLATE SUPPORT	RUBBER	8801-3*	
54	LOCKNUT	BRASS	7093	FOR RED & GREEN LIQ. MODELS ONLY
	LOCKNUT	STEEL	4014	FOR MERCURY MODELS ONLY
55	CONNECTOR	ST. STEEL	4010	FOR MERCURY MODELS ONLY
	CONNECTOR	BRASS	6225	FOR RED & GREEN LIQ. MODELS ONLY
59	GLASS PLATE & MLDG. ASSY.		8866*	
64	ROTAMETER CONN. LINE-UPPER	ST. STEEL	7312*	FOR MERCURY MODELS ONLY
	ROTAMETER CONN. LINE-UPPER	BRASS	7310*	FOR RED & GREEN LIQ. MODELS ONLY
65	ROTAMETER CONN. LINE LOWER	BRASS	7309*	
66	VALVE INSERT ASSY.	BRASS NP	6995	
67	*O* RING	BUNA-N	6495-5	
68	ROTAMETER & SCREW ASSY.		8778	
69	FLOAT	NYLON	6614-2	
70	ROTAMETER PLUG ASSY.	ST. STEEL BRASS NP	8695	
71	AIRLINE CONE	BRASS	1645	
73	DRAIN PLUG	ST. STEEL	7560	
74	WASHER	NYLON	6997	
76	MOUNTING SCREW	ST. STEEL	1544-3SN	
77	AIRLINE CONNECTOR	BRASS	3955	

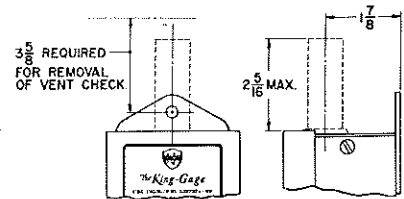


DETAIL A
(SEE NOTE 2)

DETAIL B
(SEE NOTE 2)



DETAIL C
(SEE NOTE 3)



DETAIL D
(SEE NOTE 4)

10" REQUIRED FOR REMOVAL OF OVERFLOW CHECK & RETURN WELL ASSEMBLY.

3/8" REQUIRED FOR REMOVAL OF VENT CHECK

Δ RANGE	A	B	C
-6	12 1/4	11 11/32	
-12	18 1/4	17 11/32	6 3/32
-20	26 1/4	25 11/32	7 3/32
-28	34 1/4	33 11/32	15 3/32
-35	42 1/4	41 11/32	15 3/32
-43	50 1/4	49 11/32	15 3/32
-51	58 1/4	57 11/32	23 3/32
-58	66 1/4	65 11/32	23 3/32
-66	74 1/4	73 11/32	31 3/32
-73	82 1/4	81 11/32	31 3/32
-81	90 1/4	89 11/32	39 3/32
-88	98 1/4	97 11/32	39 3/32
-96	106 1/4	105 11/32	39 3/32
-103	114 1/4	113 11/32	39 3/32
-111	122 1/4	121 11/32	39 3/32

Notes:

1. When ordering King-Gage with basic top plate (for use with capillary airline), as shown on reverse side, specify King-Gage model and range.

Example: THR-Δ
TFSR-Δ

2. When a Top Plate & Adaptor Assembly (for use with large bore tubing) is desired on a King-Gage, dimensions as shown in Details "A" or "B", whichever is applicable, will apply. When ordering, specify King-Gage model, range, and top plate designation.

Example: THR-Δ-0
TFSR-Δ-0

3. When an Overflow Check & Return Well Assembly is desired (8791-3 or 8791-4), dimensions as shown in Detail "C" will apply. Overflow Check & Return Well Assemblies must be ordered separately. See Drawing E-3970-11.

4. When a Vent Check is desired (6562-8, 6562-9, 6562-10, 6562-11 or 6562-12) dimensions as shown in Detail "D" will apply. Vent Checks must be ordered separately. See Drawing E-3970-11.

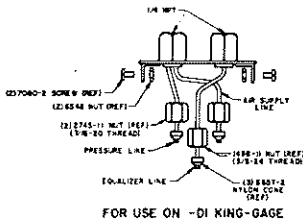
Color of Liquid (See Drawing E-3213 for selection of liquid and range)

R - Red
M - Brown
P - Purple
G - Green

○ Top Plate Designations

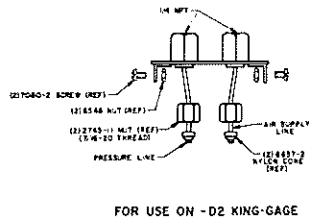
-D1, -D2, and -S1.
Δ For ranges applicable, see chart at left.

CLEARANCE & MOUNTING DIMENSIONS



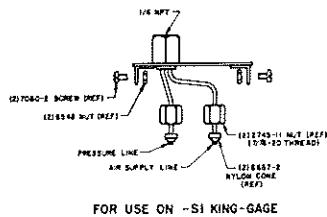
FOR USE ON -D1 KING-GAGE

①



FOR USE ON -D2 KING-GAGE

②



FOR USE ON -S1 KING-GAGE

③

LIST OF MATERIALS

QC NO.	NAME	PART NO.	REMARKS
1	REPLACEMENT TOP PLATE & ADAPTOR ASSY	7658-3R	FOR BLACK MODELS ONLY
	REPLACEMENT TOP PLATE & ADAPTOR ASSY	7658-4R	FOR ST. STEEL MODELS ONLY
2	REPLACEMENT TOP PLATE & ADAPTOR ASSY	7658-5R	FOR BLACK MODELS ONLY
	REPLACEMENT TOP PLATE & ADAPTOR ASSY	7658-6R	FOR ST. STEEL MODELS ONLY
3	REPLACEMENT TOP PLATE & ADAPTOR ASSY	7658R	FOR BLACK MODELS ONLY
	REPLACEMENT TOP PLATE & ADAPTOR ASSY	7658-2R	FOR ST. STEEL MODELS ONLY

TOP PLATE & ADAPTOR ASSEMBLIES



KING ENGINEERING CORPORATION

ANN ARBOR

MICHIGAN